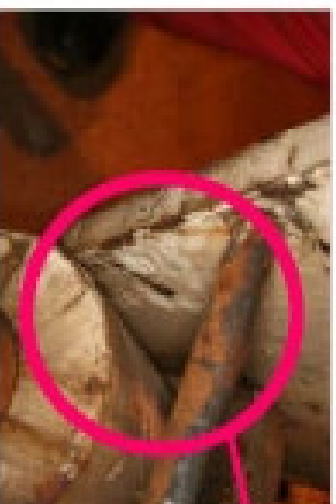
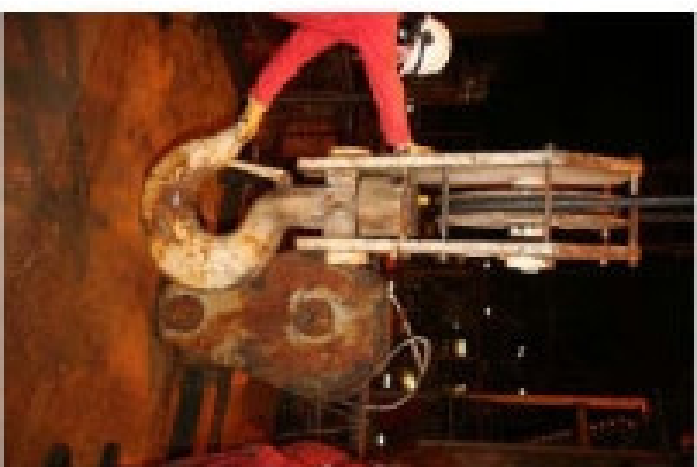


Crane hook finger injury
The injury happened when the IP's fingers got trapped as a crane hook rotated as it was being lowered.

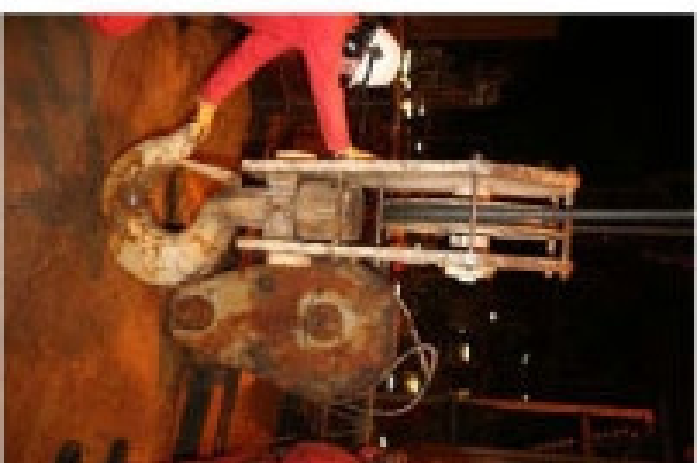
Position of IP's hand



Marks left by the IP's gloved hand



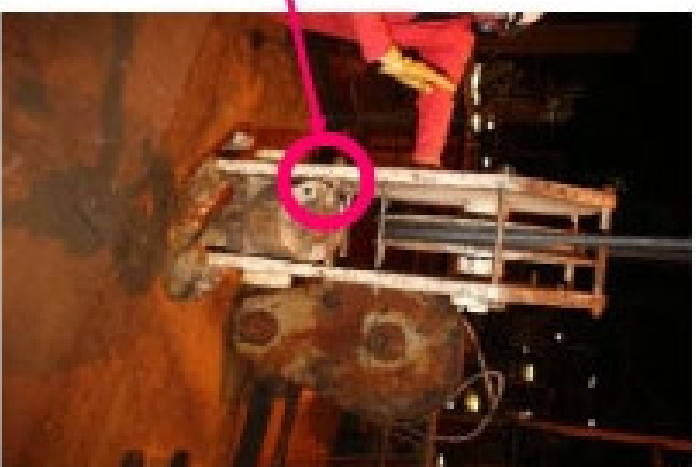
The hook is lowered...



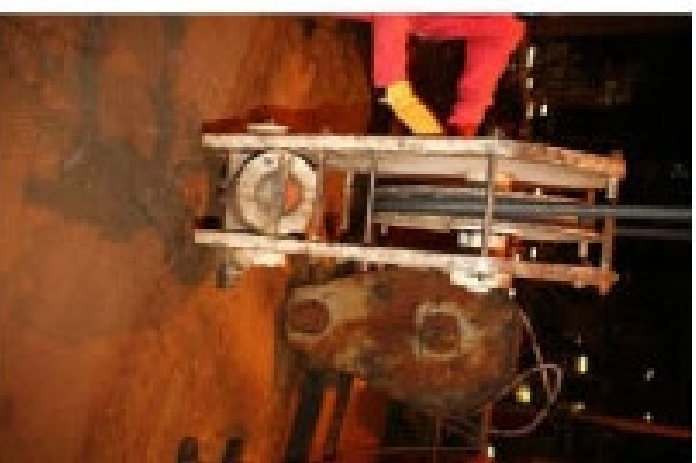
It reaches the deck.....



As it is lowered further, the hook begins to rotate



The hook rotates as it swivels, the IP tried to steady it



Approaches the deck.....



On the deck



Piece broken off hard eye



Crack visible on reverse



